

2/261 ZEN

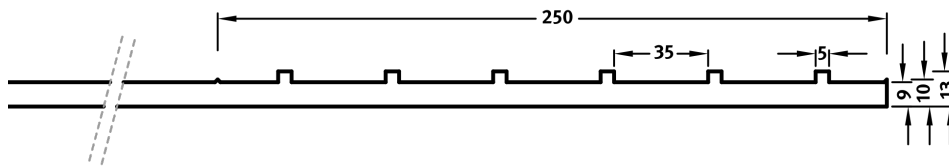
The sweeping lines and the relationship between the individual elements create a tangible arc of tension.

DIMENSIONS

Uses	Dimensions (mm)	Order Number
100	▲ 6000 × ► 3000	C 2261

100-timer formliners are supplied in an individual dimension within the maximum indicated dimensions.

The specified widths of the 10-timer and 50-timer formliners are a fixed dimension and ensure the continuity of the structure in the case of linear patterns. The longitudinal direction of the pattern is variable and can be ordered from 1 m up to the maximum dimension in 10 cm steps.



RECKLI HEADQUARTERS

Do you have a question about our products
and would like to get in touch? You can call us
on the following number:

+49 2323 1706-0

RECKLI GmbH
Industriestraße 36
44628 Herne
Germany
Fax: +49 2323 1706-50
Mail: info@reckli.com
www.reckli.com