

FORM
FOLLOWS
FABRICATION





work
in progress



5 Editorial

6+24 Inspiration

12 **FABRICATION**
Collection

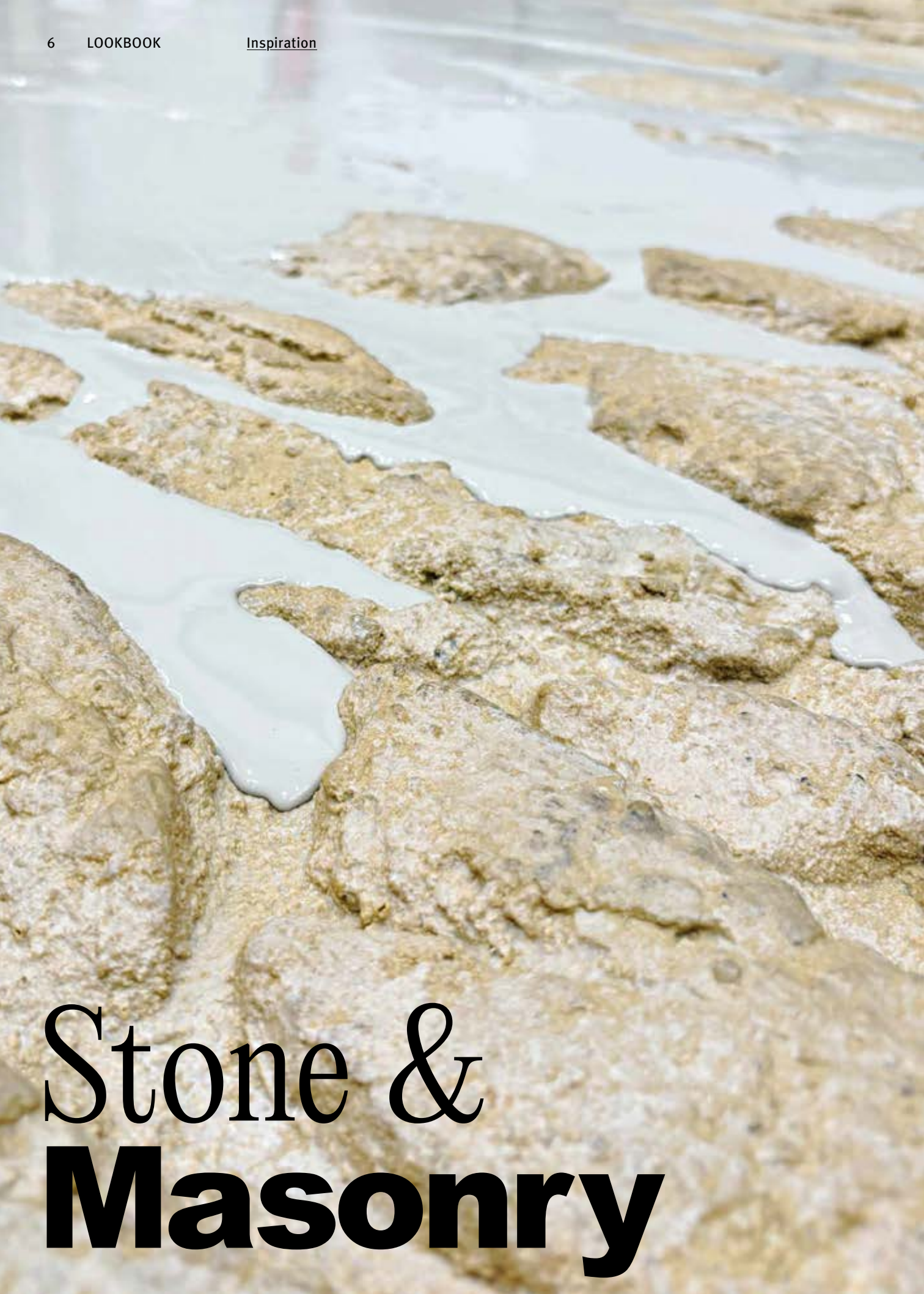
34 **RECKLI**
SELECT

From the file to the most modern production techniques such as the CNC mill – the production of precise and detailed moulds requires craftsmanship, finesse and passion for creative work.

Our new Fabrication Collection celebrates this art of forming and shaping by combining the essence of centuries-old handcrafting techniques with state-of-the-art technology. Our reliefs are one example, while other structures are dedicated to traditional façade design with wooden shingles or rammed concrete.

Whether wood, stone or plastering techniques – our SELECT structures are an example of how we can design façades in a contemporary way while still respecting traditional craftsmanship. In our *Form Follows Fabrication* collection we are continuing the tried and tested for tomorrow.

Browse through our Lookbook and you will see how we create and manufacture. You'll be surprised how much craftsmanship goes into our products.



Stone & Masonry

RECKLI SELECT →

Stone & Masonry



2/160 Via Appia

RECKLI SELECT →

Stone & Masonry

A horizontal masonry structure with natural stones of different sizes. The uneven surface of the stones enlightens the façade.



2/173 Santa Cruz 1-4

RECKLI SELECT →

Stone & Masonry

A rock structure with deep, diagonal cracks and fractures. Nature as a shaper, shaped over the years and now immortalized in concrete as a piece of history.



1/352 Embrun

RECKLI SELECT →

Stone & Masonry

Cobblestones in the vertical? The horizontal stone structure with oval, hand-laid stones provides a change of perspective.

**Naturally
grown,
handcrafted,
translated
into today.**





1/126 B Larnaka

RECKLI SELECT → Ribs & Waves

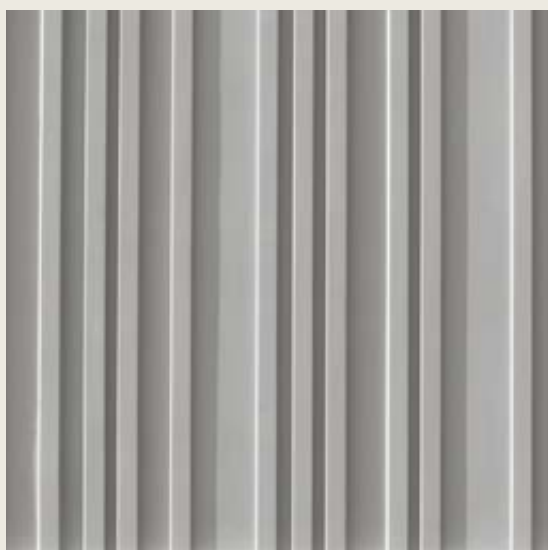
Vertically arranged elevations with a coarse fracture structure, separated by 10 millimeter wide indentations. The characteristic look is created by hammering the surface of the rib.



2/175 Friesland

RECKLI SELECT → Ribs & Waves

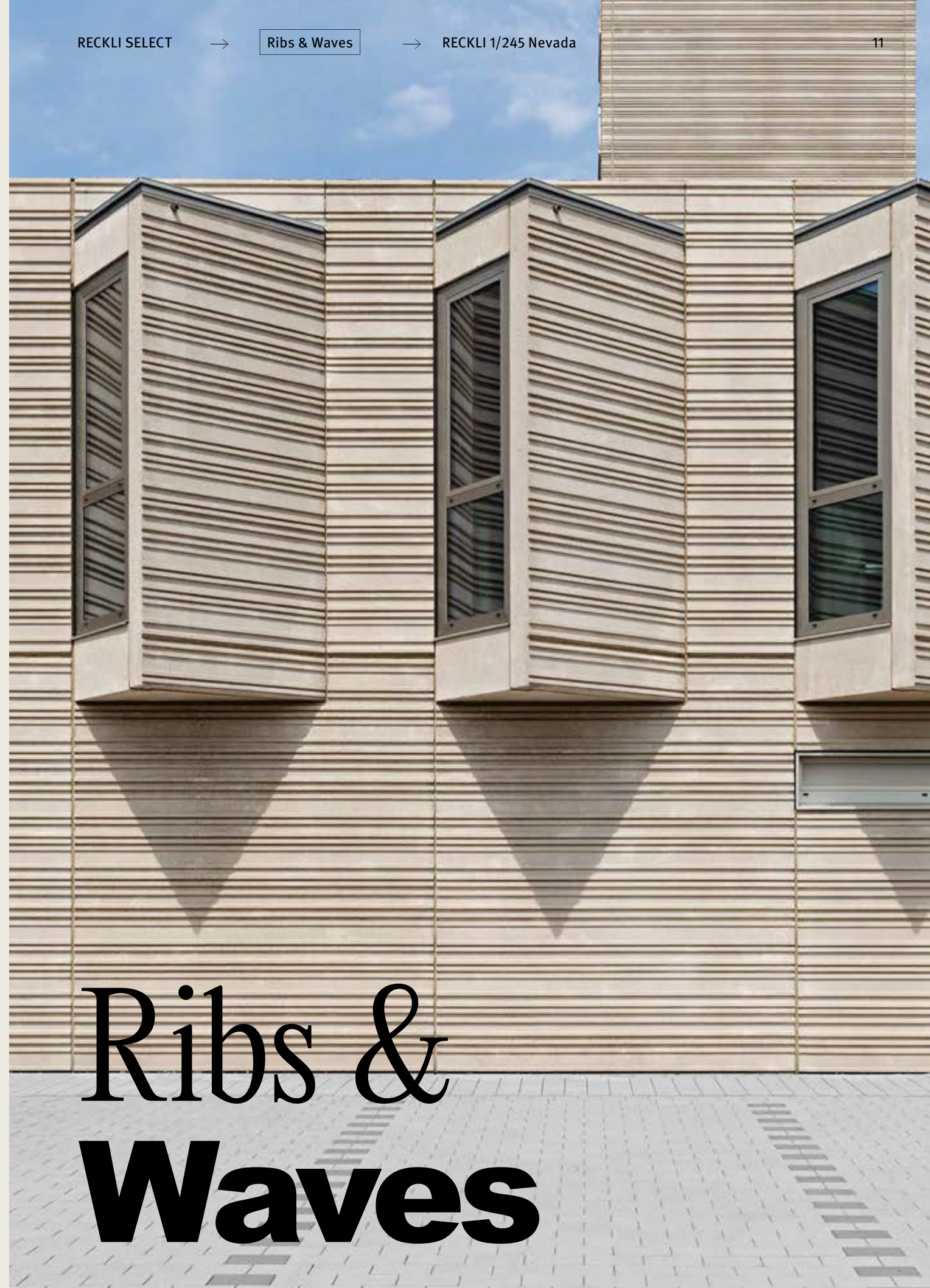
A wave-like structure with a corrugated appearance that lives from the play of light and shadow. A structure whose charm lies in the change of perspective.



1/245 Nevada

RECKLI SELECT → Ribs & Waves

A clear ribbed structure. The vertically aligned ribs of different widths and arrangements have a depth of 10 to 20 millimetres.

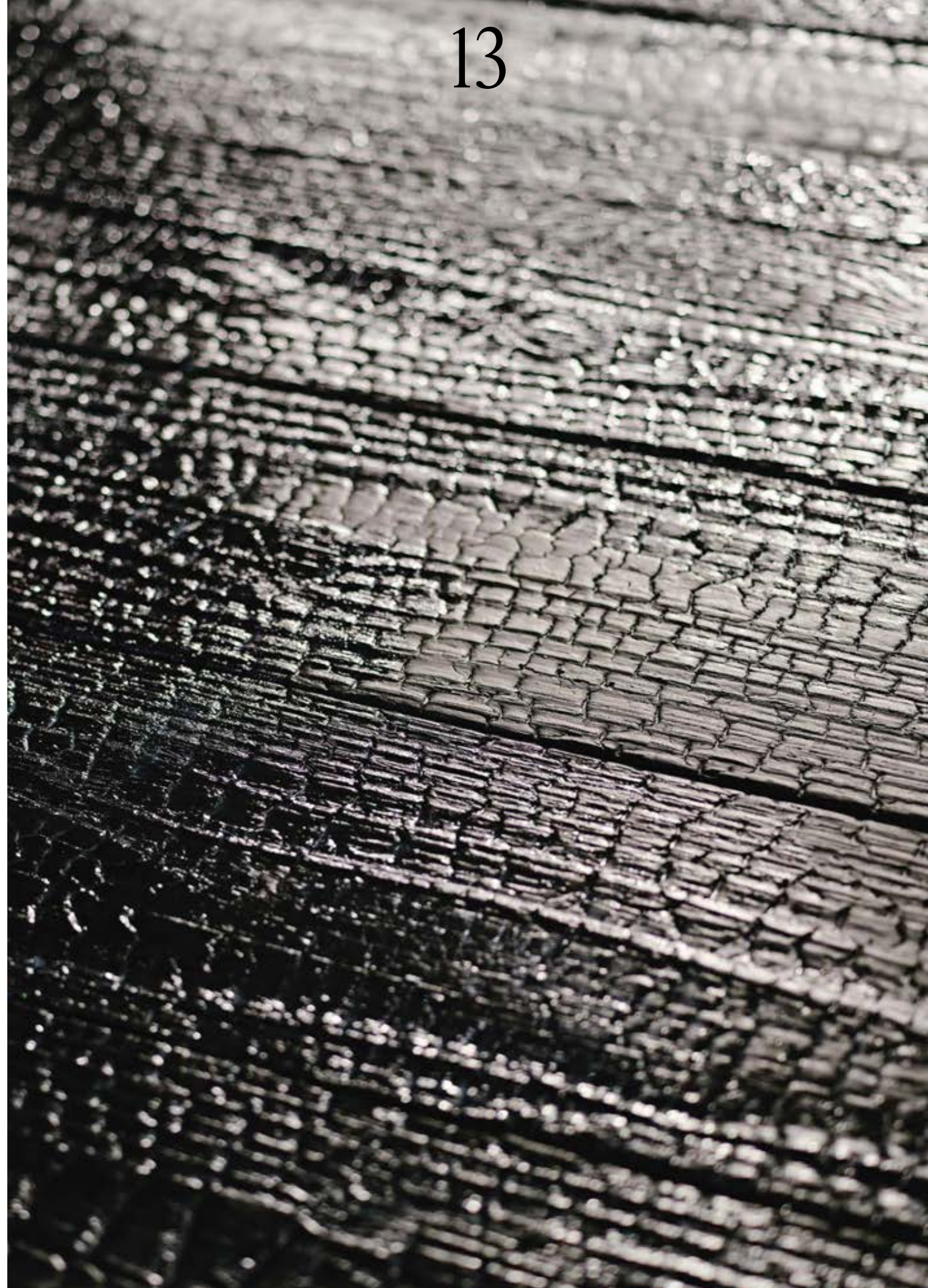


Ribs & Waves

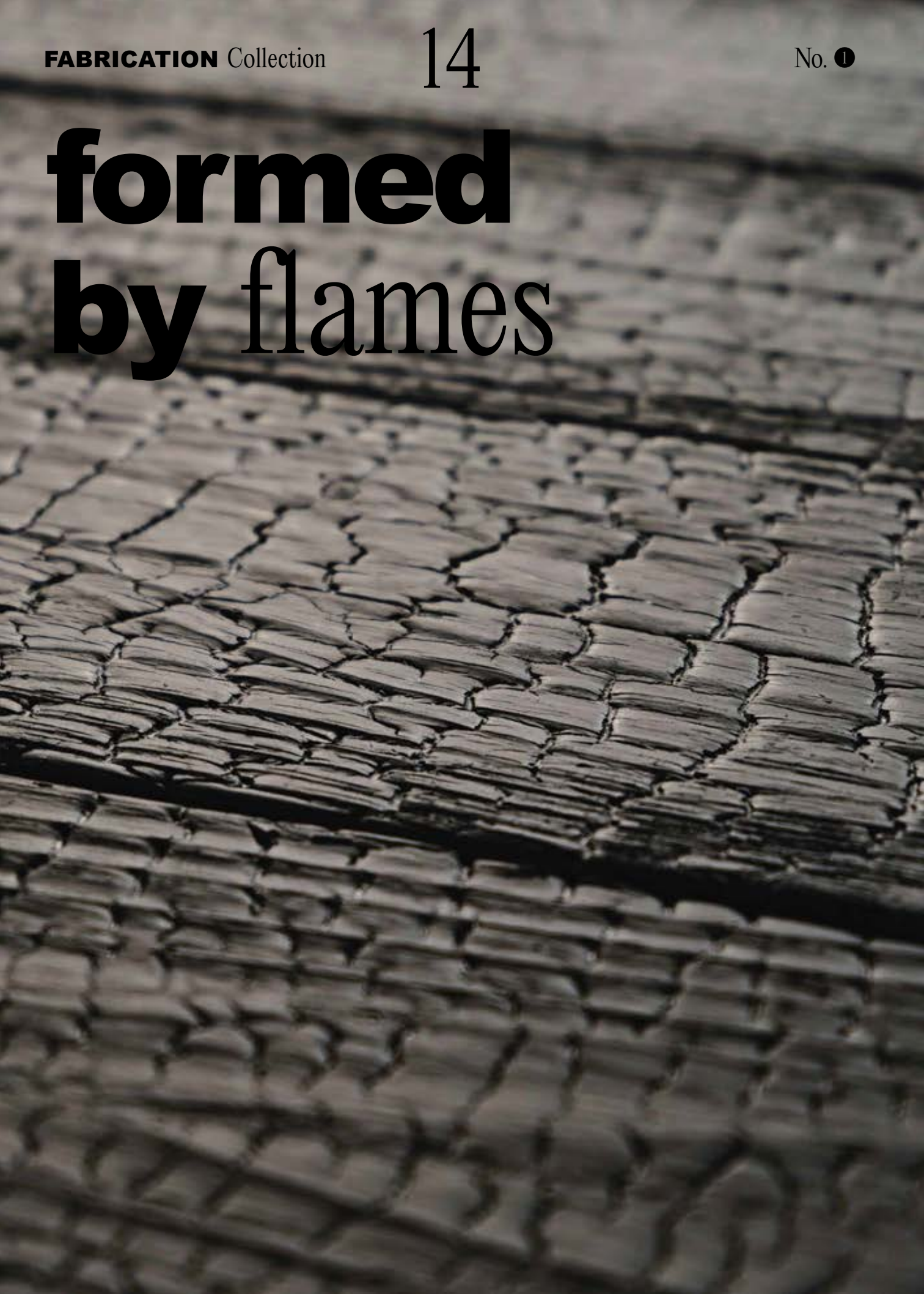
FABRICATION Collection



**We show 5 new
structures and take
you with us into our
manufacturing
techniques**



formed by flames



The traditional Japanese technique of wood preservation, YAKISUGI, makes wooden components more resistant to weathering, pests, and decay. The surface is carefully charred. The carbonization process gives the wood a distinctive texture, which also proves aesthetically appealing in concrete.

2/258 **KURO**

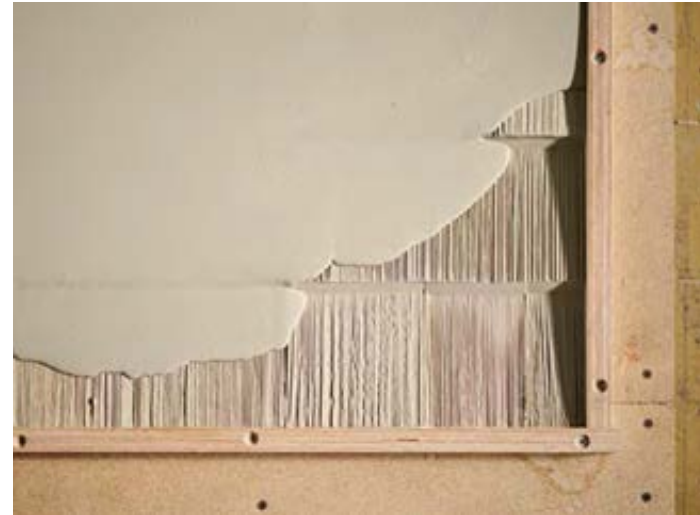


KURO – Japanese for black – preserves the play of flames in a snapshot and combines the aesthetics of the Yakisugi technique with the advantages of concrete.

2/259

PAANU

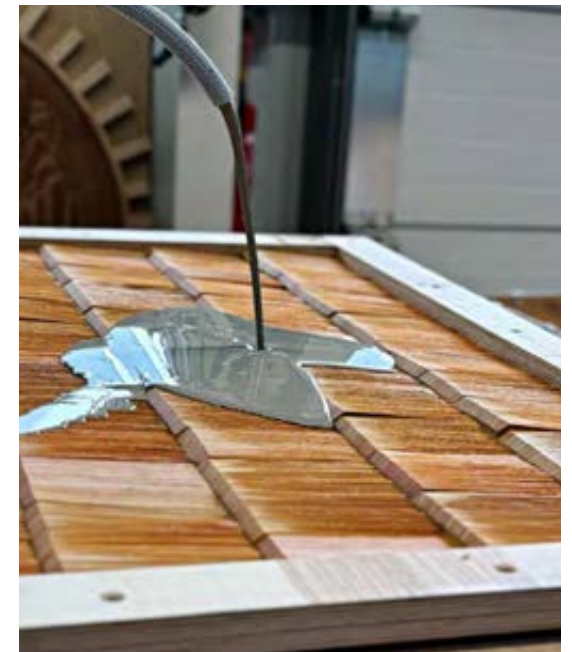
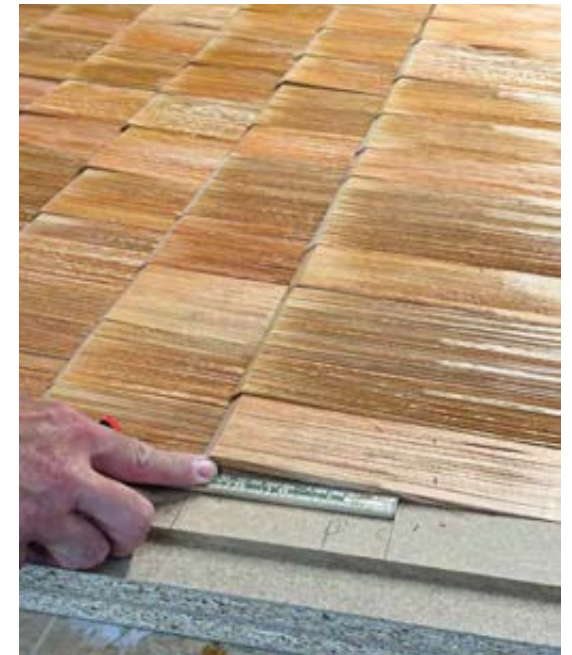
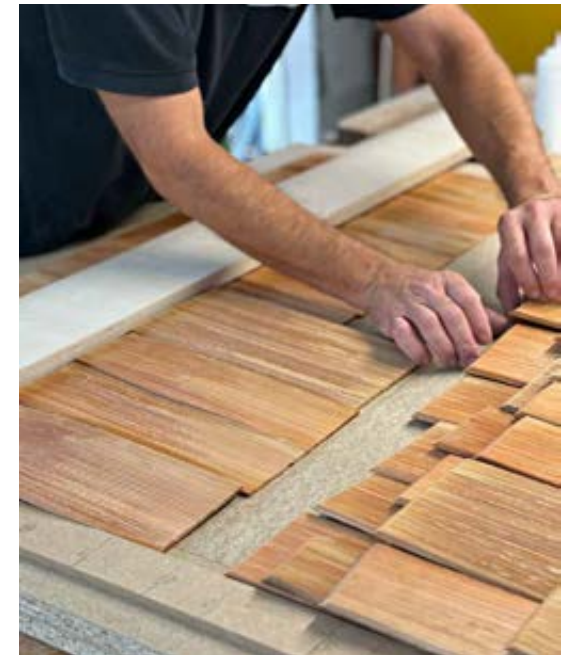
Paanu is the Finnish word for shingle and is a structure that transfers the principle of the shingle façade to concrete façades, right down to the smallest wooden fibre. The depth of detail that can be achieved in this way is particularly remarkable.



The shingle façade made of wood is a fascinating example of traditional craftsmanship and a technique, which is still used today as a durable and weather-resistant solution, especially in densely wooded and mountainous regions of Europe, such as the Alps. We integrate this design element, cast in concrete, into the urban space.

The production of our Formliners begins with the construction of a master mould. The wood is split by hand to preserve the natural grain. By gluing and nailing the shingles, the characteristic smooth, horizontal lines are created. The different heights and depths of the shingles give the structure a natural, animated look.

Once the master mould has been completed, it can be used as a positive mould for casting our Formliners. The combination of traditional craftsmanship and modern technology enables us to produce the timeless beauty of shingle façades with the design freedom of concrete. Experimenting with colour pigments, aggregates or acidification of the surface also ensures great aesthetic flexibility.



Reliefs are a versatile art form that can fulfill both decorative and narrative functions. We have transported the concept from antiquity via the Roman Empire, Renaissance and Baroque to the here and now.

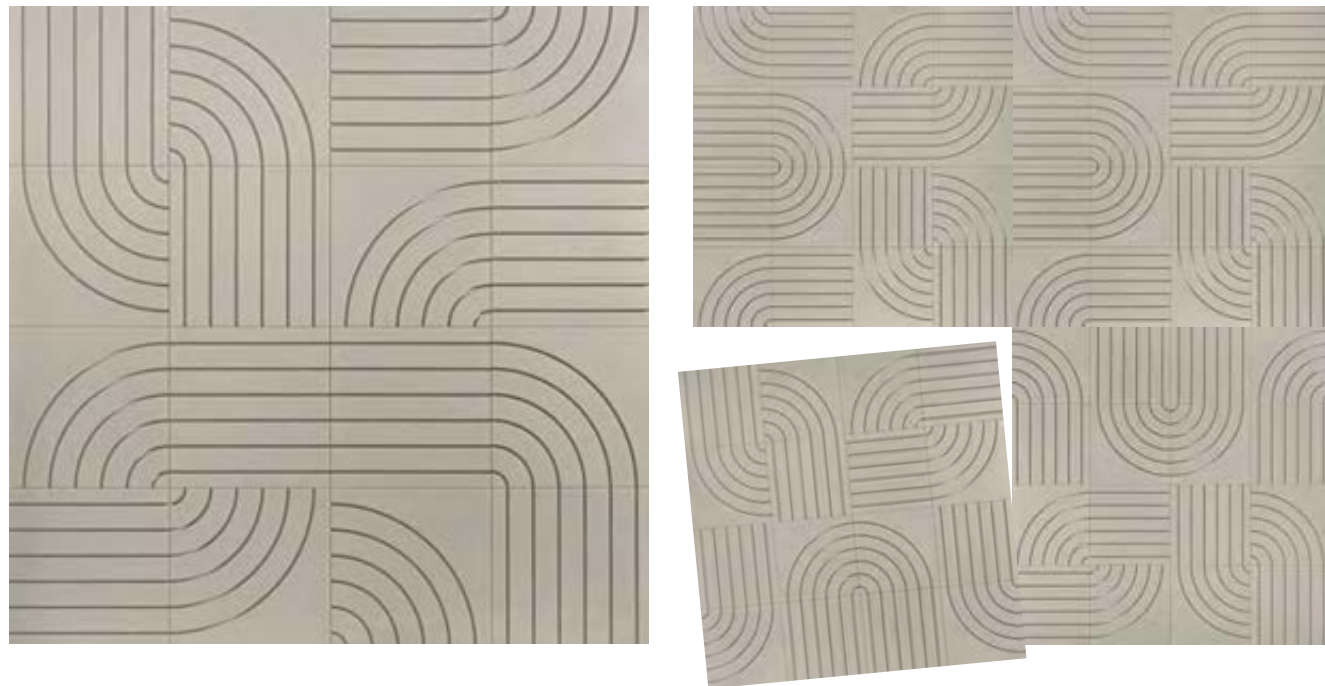


2/260
NOVA

The interplay of high and low and repeating geometric shapes creates a tactile, playful surface.

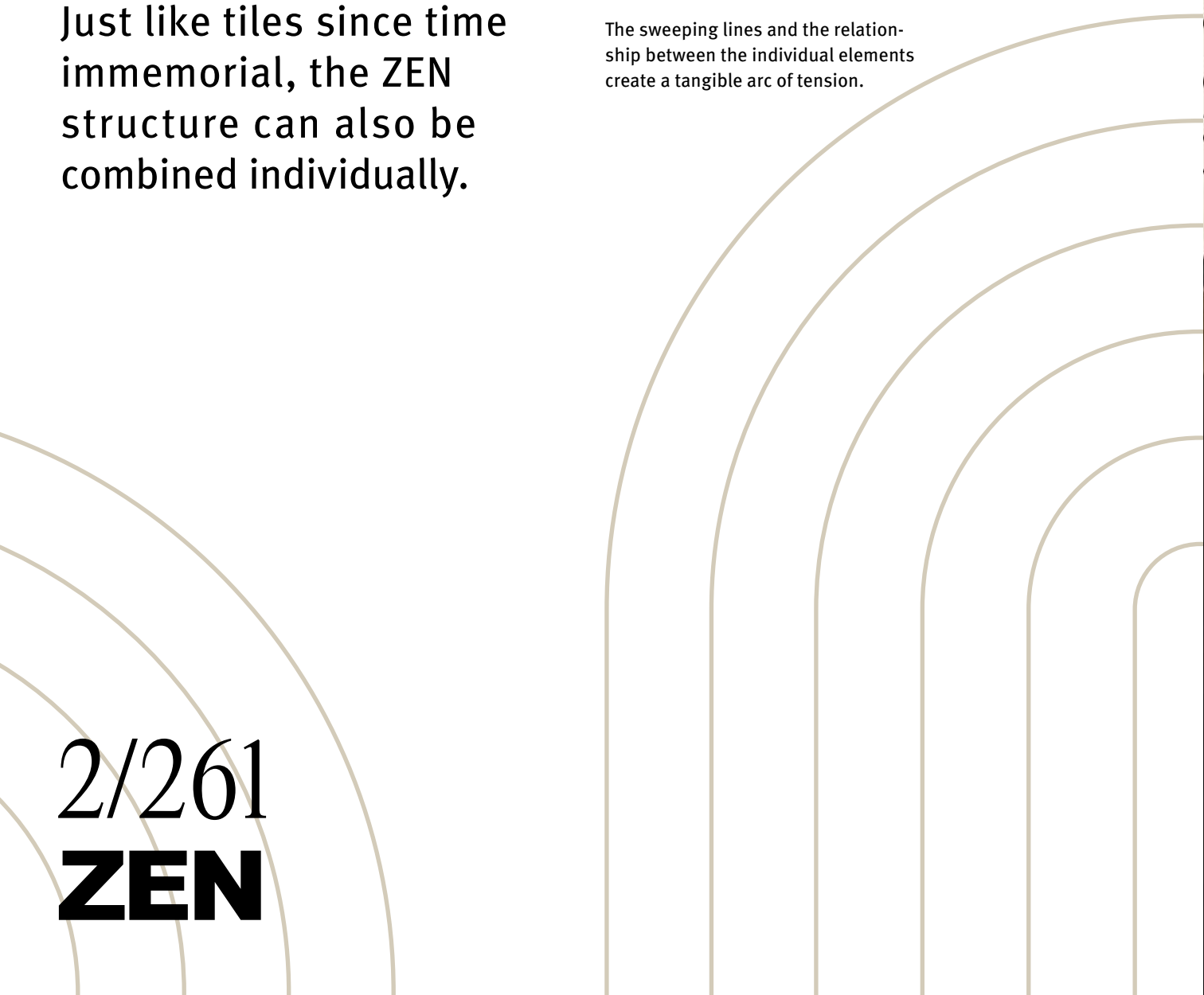


A sculptural
**play with
the surface.**



Just like tiles since time immemorial, the ZEN structure can also be combined individually.

The sweeping lines and the relationship between the individual elements create a tangible arc of tension.



2/261
ZEN





STRATA, Latin for layers, is characterized by the aesthetic and structural properties of rammed concrete. The characteristic look is created by the layered compaction.

Rammed concrete is a traditional construction method based on the manual compaction of concrete – a technique, which was developed in the 1820s by the French architect and engineer François Martin Lebrun. Today rammed concrete is extremely popular due to its unique appearance and its ability to blend harmoniously into natural surroundings.

2/262

STRATA



Smooth was yesterday: In the field of tension between traditional craft and more modern technology, walls in concrete can be aesthetically appealing design.



2/62 Tevere

RECKLI SELECT →

Roughcast

A plaster structure with very fine elevations, the surface feel of which is reminiscent of a steel file.



2/69 Marne

RECKLI SELECT →

Roughcast

A texture whose surface is reminiscent of scratch plaster. The grain size is 16 millimeters.

Roughcast





2/227 Tirari

RECKLI SELECT → Wood

By casting wood that has naturally weathered over a long period of time, we achieve this coarse, brittle texture.



2/240 Bali

RECKLI SELECT → Wood

A wooden structure with irregularly joined boards. The rough wood texture with clearly visible knots and grain imparts a rustic character to the concrete.



1/10 Pellworm

RECKLI SELECT → Wood

A vertically running wooden structure with lightly grained boards. The boards are arranged at different heights with equal spacing.

Naturally haptic. Not from the drawing board, but moulded from natural Wood



Vision becomes



It is the personalities who characterize RECKLI's collections with their love of detail and craftsmanship. **Creative skill** and industrial precision give each structure a **unique signature.**

Reality

Verena Kemper loves working with her hands. In our **manufacturing facility** the industrial design graduate is responsible for casting patterns for architects at RECKLI. Verena also combines her creative streak in her designs for new structures with a logical, industrially oriented production mindset.

Before Verena became part of the RECKLI family, the mother of three, studied design in Milan and then worked in the creative industry for several years. Now the experienced designer casts the samples for the architects and clients two days a week. The different structures and patterns still inspire Verena. For the new collection, Verena has also ventured into texture design: »The variety of possibilities and the changeability particularly appeal to me. I find it highly modern, creative and very individual to see how these structures can give a building a certain look, a face and perhaps also a function or support a design.«

In the spirit of craftsmanship, all the steps in the entire process build on each other logically – an aspect that particularly appeals to Verena. After thorough research, analysis and conception are followed by the drawing of the first drafts, the creation of models, many revision loops and the generation of 3D drawings as a result of creative thinking and technical skills.

Verena finds inspiration in everyday life: »I always walk through the world with my eyes open, taking in shapes, colours, patterns, combinations, trends and developments. I can't do anything else.«

Verena's way of working is unusual, but no exception at RECKLI. Where possible, attempts are made to give employees cross-divisional insights. In Verena's eyes, it is also a fundamental advantage if you are not restricted to one area, but have a more complete view of things. This also includes having in-house craftspeople. »This definitely shortens development times and you can have a direct influence on implementation,« says Verena.



»I love working with my hands. There is something very satisfying about seeing directly what you have created.«

– Verena Kemper

After studying at the Istituto Europeo di Design (IED) in Milan, **Verena Kemper** worked for renowned studios and brands in Italy and Germany. The graduate industrial designer has been responsible for the pattern department at RECKLI since 2020 and has designed NOVA and ZEN this year.

RECKLI *SELECT*



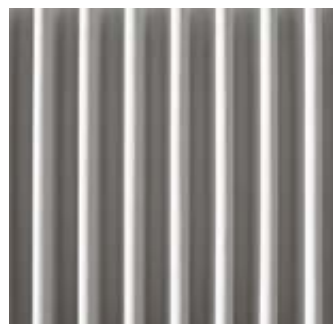
1/12 Rügen

Abstract



2/30 B Havel

Ribs & Waves



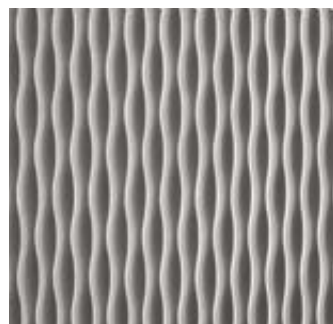
1/42 Madeira

Ribs & Waves



2/48 Ruhr

Wood



1/43 Corse

Abstract



2/79 Mayenne

Stone & Masonry



1/46 Rib Type N

Ribs & Waves



2/90 Travertin

Stone & Masonry



2/24 Donau

Wood



2/93 Red River

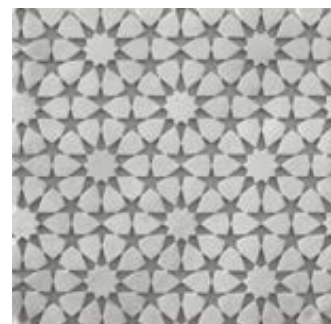
Roughcast

A complete overview of all concrete structures with all technical data can be found here:



2/104 Sambesi

Roughcast



2/111 Oriental 11

Abstract



2/120 Rhombus

Functional



2/125 Dordogne

Abstract



2/156 Steinwald

Stone & Masonry

reckli.com



2/80 Rasterfix

Functional



2/208 Volta

Abstract



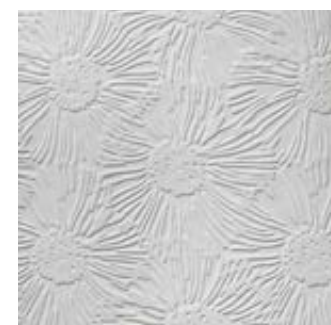
2/239 Sumatra

Stone & Masonry



3/321 Groove

Collection



3/322 Flurry

Collection

The most sustainable textured Formliners in the world – ISCC+ certified

We are constantly working to make our Formliners more sustainable. An important step on this path: ISCC+ certification. This makes us the only manufacturer to date to offer Formliners that meet the sustainability requirements of the ISCC across the entire supply chain – from the first raw material to the finished product. In concrete terms, this means that our certified Formliners consist of up to 90 % sustainable raw materials. All RECKLI Formliners can be ordered in this certified sustainable form. The ISCC is a global sustainability certification system that covers all raw materials and markets.

Scan the QR code and find out more.



RECKLI Lookbook #4

FORM FOLLOWS FABRICATION

January 2025

Publisher

RECKLI GmbH, www.reckli.de

Industriestraße 36, 44628 Herne, Deutschland

T +49 2323 17060, F +49 2323 170650

Lutz Hammer (Managing Director),
Carsten Nierobisch, Kirsten Strickstroek
marketing@reckli.de

Responsible agency

Ten Ten Team, www.tenten.team

Ina Bunge (Creative Direction), ina@tenten.team

Linda Pezzei (Editor-in-Chief), l.pezzei@wor-ding.com

Print

mediaprint solutions GmbH, www.mediaprint.de

Eggertstraße 28, 33100 Paderborn

Picture credits

P. 3: Tatra Archive of Planet Earth, Kościelisko, Poland

(Filip Bramorski)

P. 4: Production (Alexandra Kowitzke)

P. 8: Tatra Archive of Planet Earth, Kościelisko, Poland

(Filip Bramorski)

P. 11: Fire station Ingelheim, Germany (Erich Spahn)

P. 12, 13, 14, 16, 19, 21: Production (Jan Ladwig)

P. 25: Schinkelplatz, Berlin (J. Konrad Schmidt)

P. 26, 27, 29: Impera Park Cakovice, object L, Prague,

Czech Republic (Andrey Golovashev)

P. 30, 31, 33, 36: Production, Verena (Jan Ladwig)

Structure images: Jan Ladwig





work
in progress