

Sustainability & Environment



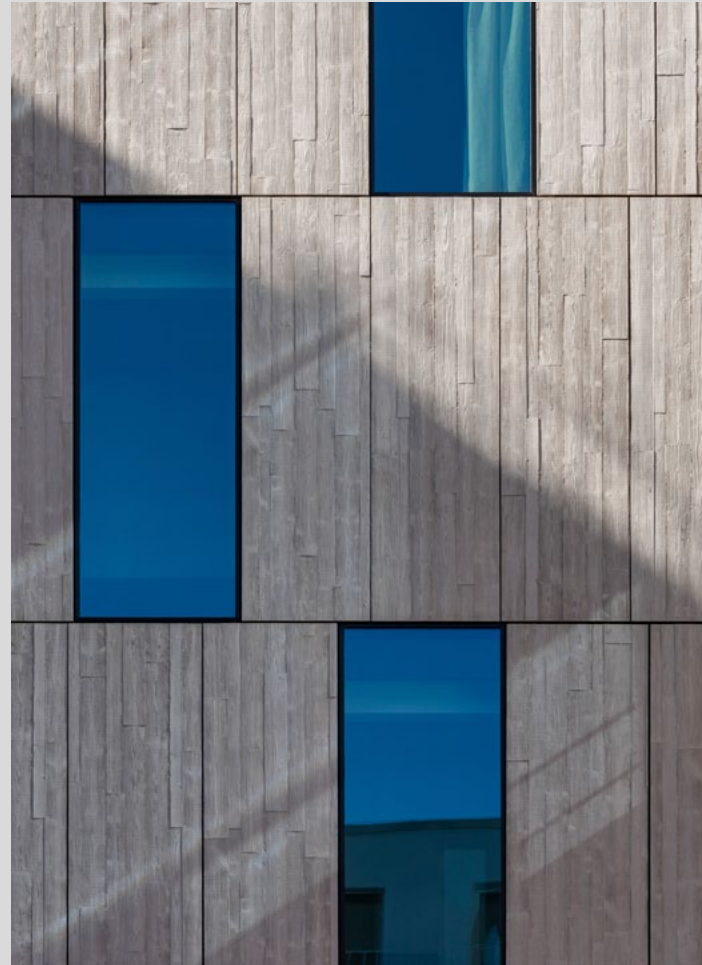
We are constantly working to make our textured formliners more sustainable. An important step on this path: ISCC+ certification. This makes us the only manufacturer to date to offer formliners that meet the sustainability requirements of the ISCC across the entire supply chain - from the first raw material to the finished product.

In concrete terms, this means that our certified formliners consist of up to 90% sustainable raw materials. The ISCC is a global sustainability certification system that covers all raw materials and markets.

You can find more information at: iscc-system.org

RECKLI SELECT

RECKLI SELECT is our collection of diverse concrete textures from natural to imaginative. In addition to wood, more than 200 designs bring stone and rock textures, masonry, wood, plaster, oriental, fantasy and anti-slip textures, ribbed and wave profiles as well as fracture effects to the façade.



RECKLI GmbH

Industriestraße 36
44628 Herne
Germany

T +49(0) 2323 1706-0

info@reckli.de
reckli.com

RECKLI®



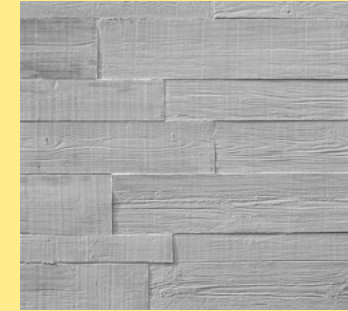
Formliner in wood optic

RECKLI formliners in wood look

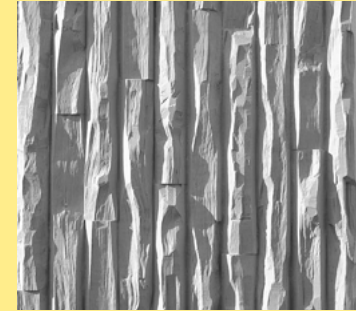
Optimize your concrete projects economically and innovatively with elastic textured formliners from RECKLI – the cost-efficient and quality-enhancing alternative to conventional wooden formwork.

	Conventional wooden formwork	RECKLI Formliners
Cost efficiency	<p>--- to ++</p> <p>Wooden formwork is cheap to produce, but due to the corrosive nature of concrete it is often unusable after just a few uses and is often only worthwhile for smaller projects.</p>	<p>○ to ++++</p> <p>The more frequently the formliner is to be used, the cheaper the individual application. RECKLI formliners can be used for concreting up to 100 times.</p>
Processing	<p>○</p> <p>This is because the formwork often has to be replaced even with moderate use.</p>	<p>○</p> <p>The initial bonding to the formwork requires a certain effort. Concreting can then be carried out continuously.</p>
Concrete Quality	<p>—</p> <p>Concreting on wood often results in air pockets, which can impair the appearance. Depending on the treatment of the wood, reactions with the concrete mix may occur.</p>	<p>++++</p> <p>The optimization of the flow properties of the concrete, the reduction of blowholes and air inclusions lead to a superior quality of the concrete on the formliner, so that the highest fair-faced concrete class can be achieved.</p>
Design-spectrum	<p>++</p> <p>Wood offers great scope for design and processing. The rigid nature of the material can cause problems with complex structures.</p>	<p>++++</p> <p>Formliners are produced by molding real wood. This gives them an absolutely authentic look. The combination with modern production technology means that almost any design can be realized.</p>
Longevity/Consistency	<p>---</p> <p>Conventional wooden formwork wears out with every use and therefore produces inconsistent results. They often have to be replaced after 5 – 10 uses.</p>	<p>++++</p> <p>The precise, sharp-edged and aesthetically pleasing results of our formliners are impressive compared to wooden formwork, which often wears out quickly. The first and the hundredth time you pour concrete.</p>
Kreativer Potential	<p>++</p> <p>Wood offers a wide range of processing options. However, the reproduction of other materials such as stone is only possible to a limited extent.</p>	<p>++++</p> <p>The elastic nature of the matrix also enables complex patterns patterns and can be used for rounded shapes. For custom-made products, we rely on a combination of state-of-the-art machine technology and meticulous manual work.</p>

These and over 30 other wooden structures can be found at: reckli.com



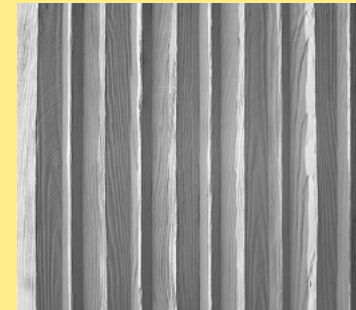
2/163 Fraser



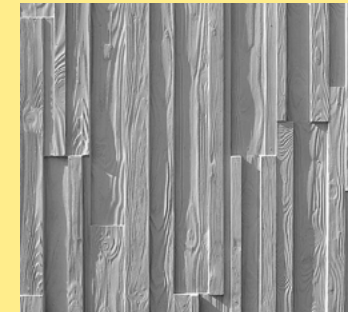
1/03 Fehmarn



2/35 Alster N



1/11 Reichenau



1/317 Rustic



2/26 Elbe



1/331 Etampes



Discover all of our wood structures